



Linewize Courses

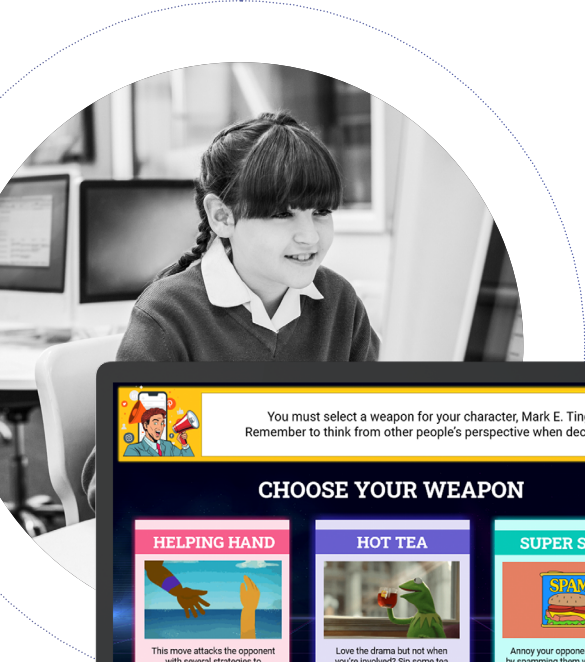
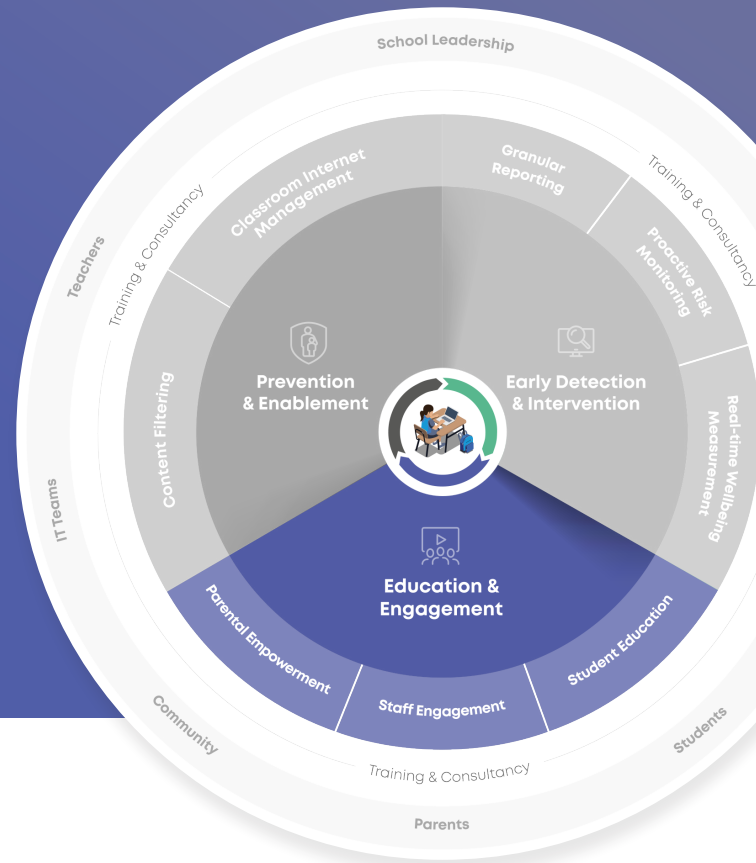
Helping students become resilient and ethical digital citizens.



About Linewize Courses

When a child is safe and resilient online their wellbeing can increase, their learning can improve and their future can transform.

Linewize Courses is a series of interactive learning courses designed to give students the resilience, self-regulation and online safety behaviours needed to thrive in their digital lives.



How it works

Accessed from within our Classwise solution, **Linewize Courses** is specifically designed for students aged between 7 and 13 years.

Courses promote media literacy across 6 pillars each covering a key component of good digital citizenship.

Teachers can introduce each course to students to do in class or at home, and at their own pace to maximise learning.

Linewize Courses features & benefits



Teaches students how to become digitally resilient and ethical citizens:

✓ **Promotes media literacy across 6 key pillars:**

- 1.. Mental health & wellbeing
2. Privacy & information safety
3. Respectful relationships
4. Human rights & compassion
5. Digital media literacy
6. Digital footprint & online personas

✓ **Designed by specialists**

Designed by specialist teachers, learning designers and clinical psychologists to meet the needs of students today.

✓ **Encourages resilience**

Supports critical thinking and emotional intelligence as well as self-regulation and positive behaviours.

Dedicated to keeping children safe



Designed for education settings:

✓ **Aligns to curriculum standards**

Course learning outcomes, assessments and activities have been aligned with curriculum standards.

✓ **Meets learning objectives**

All courses include evidence-based pre- and post-assessment as well as teaching resources that correlate with learning objectives.

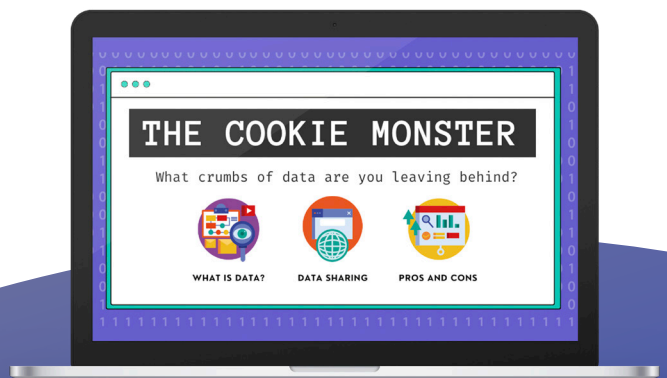
Linewize Courses features & benefits



Maximises learning:

- ✓ **Focus on fun**
Gamification and high levels of interactivity make learning fun and boost knowledge retention.
- ✓ **Self-paced learning**
Makes it easy for students to go at their own pace to help increase engagement and motivation.
- ✓ **Student-centred**
Student-centred learning makes content relatable and places the students' interests, needs and abilities at the core of the learning experience.
- ✓ **Available as a module in Classwize**
Teachers can seamlessly introduce these powerful courses for students to do in class or at home, quickly and easily.

*harnessing the power
of connection*



What a customer says:

“Linewize Courses has really made students stop and think. The simplicity of the language used and how it’s structured reaches the kids and is easy to understand.”

Teacher
Manea College

Linewize Courses's role in our Digital Safety and Wellbeing Framework



About our Framework

Our Digital Safety and Wellbeing Framework enables school leaders to explore our solutions as they apply to the three most common pillars found in health and safety planning:

1. Prevention
2. Early detection
3. Education.

Schools can use this, supported by our Linewize team, to identify their priorities and plan the steps needed to achieve a more efficient and robust provision of care.

Our Framework is also a useful way for school leaders to keep abreast of the types of solutions available to them in the market.

As well as to better understand the role each of them plays and how they combine to build a digital wellbeing culture across the whole community.

none of us is as powerful as all of us

The role of Linewize Courses

Linewize Courses sits in the Education & Engagement part of our Framework.

It supports the development of positive, self-directed digital behaviours for students at a critical time in their lives.

Linewize Courses is a vital component in a proactive, digital safety and wellbeing provision.

More information

Get in touch

To learn more about Linewize Courses and to arrange a demo please contact our team. We are waiting to help.

T: 1300 687 052

W: linewize.io/courses

E: enquiries@linewize.io

Qoria

Linewize is part of Qoria, a global technology company, dedicated to keeping children safe and well in their digital lives. We harness the power of connection to close the gaps that children fall through, and to seamlessly support them on all sides - at school, at home and everywhere in between.

Find out more
www.qoria.com

linewize.io



Linewize
by Qoria