



# Linewize Online Safety Hub

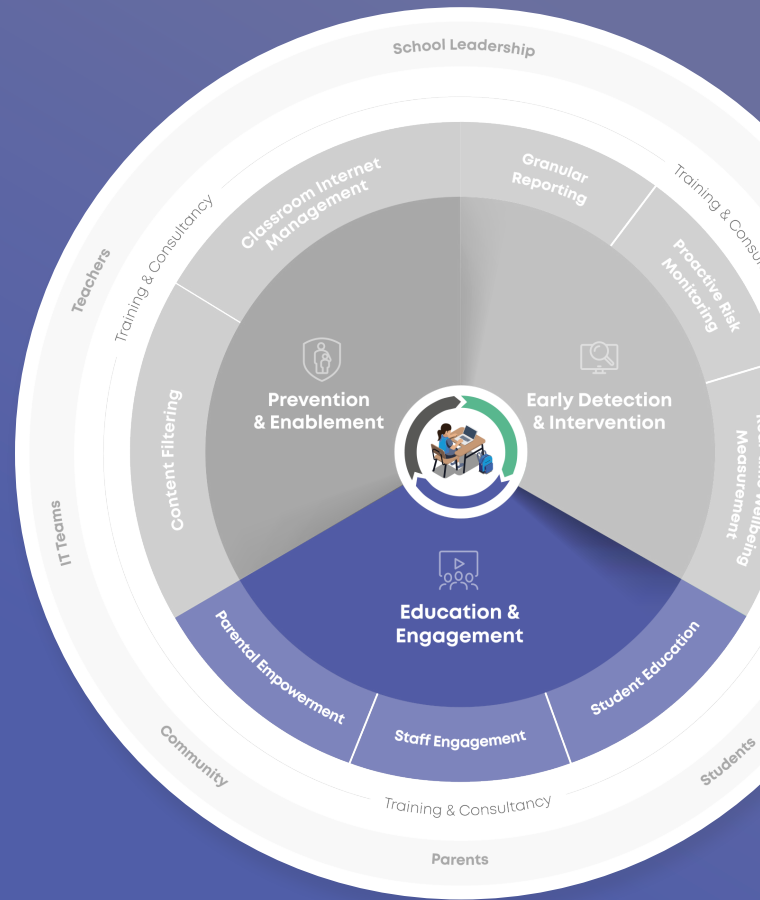
A dedicated resource to help schools and parents have meaningful conversations with children about their digital safety and wellbeing.



# About Linewize Online Safety Hub

Linewize's Online Safety Hub is a dedicated resource to help schools and parents have meaningful conversations with children about their digital safety and wellbeing.

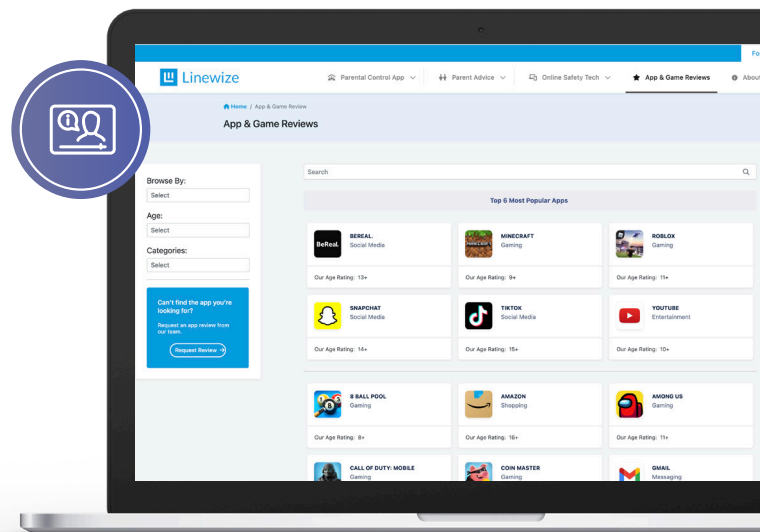
Written by experts and packed with insights and how-to guides, the Online Safety Hub provides a valuable destination for leaders, pastoral staff, teachers, and parents to build their knowledge, stay abreast of trends and help bridge the knowledge gap between themselves and the children in their care.



## How it works

The Online Safety Hub is customised with your school's branding to reassure parents of the importance you place on digital safety and wellbeing.

It's then deployed for your community to begin using. Our experts will arrange a parental webinar to introduce your community to the Hub and answer any questions they may have. Our dedicated team then keep it up to date with all the latest advice and guidance. It couldn't be more simple.



# Linewize Online Safety Hub features & benefits

## Written by experts:

- ✓ **World leading experts**  
Our innovative platform brings together insights from the world's most respected online safety and wellbeing experts.
- ✓ **Multi-disciplinary expertise**  
Each of our experts is a leader in their field, offering rich knowledge and experience in the fields of technology, psychology, teaching, governance, law enforcement and digital wellness.
- ✓ **Rich mix of content**  
Multiple content types ensure help is available in the right form for the right circumstance. Information includes how-to guides, articles, blog posts, FAQs, step-by-step instructions, conversation starters and much more.

*Dedicated to keeping  
children safe*



## Up to the minute advice and guidance:

- ✓ **Social media & gaming deep dives**  
Contains in-depth information on popular social media and gaming platforms, including TikTok, Fall Guys, Minecraft and Instagram.
- ✓ **Digital behaviours**  
Provides information to help encourage discussion around positive digital safety behaviours including cyberbullying, oversharing and screen time.
- ✓ **Detailed app reviews**  
Assesses the safety levels on all commonly used apps, including age suggestions & safety settings.

# Linewize Online Safety Hub features & benefits

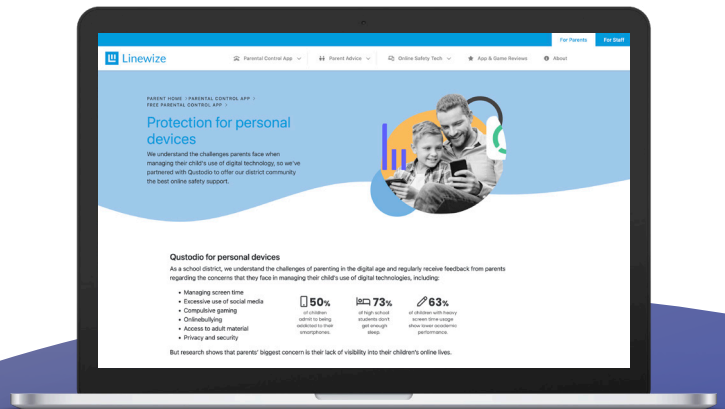


## A practical resource for schools:

- ✓ **School branding**  
Your portal will be unique to your school and bear your logo and colours to reassure your parents of the importance you place on digital safety and wellbeing.
- ✓ **Support for your parental community**  
Our experts will facilitate a face-to-face or webinar session to launch the portal and create engagement within your parent community.

- ✓ **Dedicated staff area**  
Supports teacher development through up-to-date resources. It also features easy-to-share content for school social media channels and newsletters — helping keep online safety top of mind in your school community.

*harnessing the power of connection*



“I came across Linewize through a good colleague of mine, who was actually testing out your solution and told me ‘You should check them out’. So we did and it was love at first sight. You guys just nailed it!”

**Michael Elson, District Technology Coordinator  
South Amboy Public Schools**



# Online Safety Hub's role in our Digital Safety and Wellbeing Framework



## About our Framework

Our Digital Safety and Wellbeing Framework enables school leaders to explore our solutions as they apply to the three most common pillars found in health and safety planning:

1. Prevention
2. Early detection
3. Education.

Schools can use this, supported by our Linewize team, to identify their priorities and plan the steps needed to achieve a more efficient and robust provision of care.

Our Framework is also a useful way for school leaders to keep abreast of the types of solutions available to them in the market.

It also helps them better understand the role each of them plays and how they combine to build a digital wellbeing culture across the whole community.

*none of us is as powerful as all of us*

## The role of Linewize Online Safety Hub

The Linewize Online Safety Hub sits in the Education & Engagement part of our Framework.

It improves the knowledge and awareness of all stakeholders, enabling them to have more informed and successful conversations with the children in their care.

The Linewize Online Safety Hub helps build confidence and culture across a school community and is a vital component in a proactive digital safety and wellbeing provision.

# More information

---

## Get in touch

To learn more about Online Safety Hub, including a demo, please contact our team. We are waiting to help.

T: 1300 687 052

W: [linewize.io/online-safety-hub](https://linewize.io/online-safety-hub)

E: [enquiries@linewize.io](mailto:enquiries@linewize.io)

## Qoria

Linewize is part of Qoria, a global technology company, dedicated to keeping children safe and well in their digital lives. We harness the power of connection to close the gaps that children fall through, and to seamlessly support them on all sides - at school, at home and everywhere in between.

Find out more  
[www.qoria.com](https://www.qoria.com)

[linewize.io](https://linewize.io)



**Linewize**  
by Qoria

