



Case Study: Australian Schools share their experience of Linewize Monitor



Monitor is our fail-proof safety net that nothing gets through. We are able to see and capture things that would not be caught because we are monitoring the whole student device.”

Francis McLaren,
Coolum Beach Christian College

About the schools



SHORE

The Sydney Church of England Grammar School (Shore) is one of the leading independent schools in Sydney, Australia. They prioritise a comprehensive pastoral care program for students, recognising the importance of digital resilience and fostering positive online relationships.



**SAINT JOHN
THE APOSTLE
PARISH SCHOOL**

St John The Apostle School is a Catholic Primary School located in Tarneit West in Victoria. St. John’s School values transparency, adapting to evolving digital trends, collaborating with experts, and engaging the entire school community in the pursuit of promoting digital safety and wellbeing.



**COOLUM BEACH
CHRISTIAN COLLEGE**
knowledge.wisdom.love

Coolum Beach Christian College, located on the beautiful Sunshine Coast in Australia, stands out for its proactive approach to digital safeguarding.



Why did you decide to implement a digital monitoring solution?

Coolum Beach Christian College: We started with a filtering system that helped spot red flags, but red flags take time to investigate. While Stop and Block is crucial for protecting our kids, it's just one part of the equation and doesn't really show us changes in student behaviour. We wanted more contextual information and more visibility of what our students were doing online.

What draws us to Monitor is the broader perspective it offers. The way the data is organised is very clear, and we also appreciate that we can narrow it down to individual students.

This is especially important in the secondary school setting when we have a student of concern. We take a comprehensive approach to support them, and examining this data is a crucial part of the process. Monitor enables us to spot emerging trends, behaviours, and areas of concern, all of which are crucial for us to be proactive in our digital safeguarding approach.



It's really challenging to get visibility on what happens online with your students. These things are happening in a place you don't have access to. This means you spend so much time trying to find out 'things', and often don't get the opportunity to act appropriately and help the student. With Linewize Monitor, we can."

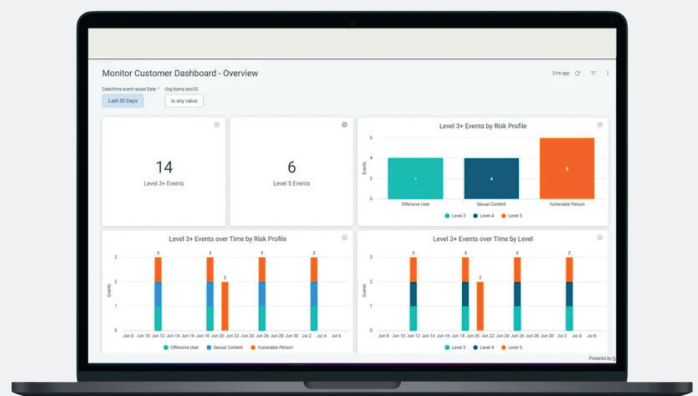
Derek Champion,
Acting Deputy Head Pastoral Care
Shore School

How has Monitor impacted your school?

Shore School: What we've discovered about Monitor is that it's very user-friendly. It's helpful in that it directs information to the right people based on the nature of the issue. Monitor provides us with the visibility and ability to support students who need help.

Matters of significant concern are promptly relayed to deputy-level personnel who need to have visibility and take swift action for various important reasons. On the other hand, less critical issues might be directed to middle management, allowing them to handle the problem effectively. Having the information categorised and distributed to the right individuals has proven to be incredibly valuable and helpful for our operations.

We quickly got used to receiving information notifications directly in our inboxes and emails, which has been great. We're a school that relies heavily on email communication, so it's convenient. It enables us to communicate, coordinate our actions, and respond effectively. So, having information delivered through Linewize Monitor has been very useful, and adapting to it was not a significant challenge for us.





How did you communicate using Linewize Monitor with your school community?

St John The Apostle School: It was well-received by our parents. One key factor contributing to its positive reception was the information sessions we ran for staff and parents. They were likely taken aback by the realisation that they might not have fully understood what their kids were exposed to online – especially online behaviours that may be exhibiting or risks they may be encountering. This insight prompted a collective recognition that in an increasingly online world, it was time to assess what our kids were capable of online and perhaps reset some boundaries.



The great thing is that it takes a screenshot of what they've done. So if there's a parent in denial or a child who's not quite admitting what they've searched or what they're trying to do, we've got a screenshot there to say, look, this is what's come up.



That's been really, really beneficial for us. And we've found over that time now that our alerts have reduced considerably.”

Mr. Simon Dundon, Principal
St John the Apostle Catholic School

These conversations with our parent community allowed them to express that they felt comfortable with the idea of us monitoring their children's online activities. We actually found Linewize Monitoring to be helpful in picking up cues that were happening outside of the browser.

For example, we found that kids have sometimes gone into a Google Doc or a slide deck and they've typed something about another student they've shown or shared it with another kid, and then they go and delete it. That's actually been really handy because it picked up a few things we probably would have missed in the past.

Contact us

Web: linewize.io
Email: sales@linewize.io

About Linewize Monitor

Linewize Monitor is a human-moderated, real-time digital monitoring solution. It alerts designated school staff to students becoming vulnerable based on their digital behaviours. Educators can focus on the business of educating, knowing that their students and digital devices are protected both online and offline.