



Case Study

The Sydney Church of England Grammar School (Shore)

Derek Champion, Acting Deputy Head Pastoral Care

Shore's Holistic Approach to Student Digital Wellbeing and Character Education.

How Shore's digital wellbeing initiatives are enabling the school to take a more proactive approach to early intervention of online risks, and to foster positive student online interactions.

From cybersafety education to early detection and intervention

As one of the leading independent schools in Sydney, Australia, The Sydney Church of England Grammar School (Shore) prioritises a comprehensive pastoral care program for its students, recognising the importance of digital resilience and fostering positive online relationships. Through character education, the school aims to develop well-rounded individuals by equipping them with essential skills to navigate both the online and offline worlds.

Shore understands that while the online and offline worlds are connected, transferring offline skills to the online space is not easy. So, for them, teaching students the significance of engaging positively and

productively in their digital interactions is crucial, especially since much of students' learning and socialising happens online.

For Shore, education plays a pivotal role in providing these necessary skills. As part of this effort, the school conducts Linewize ySafe sessions to educate students on their online safety, equipping them with relevant skills and promoting responsible digital citizenship.

We want to equip students with the right sorts of skills, abilities and capabilities because it's going to have an impact on their learning"

Derek Champion,
Acting Deputy Head Pastoral Care, Shore



What Shore wasn't seeing: navigating the challenges of online Interactions

Shore believes in a holistic approach to student digital wellbeing. And while they were adept in educating students about the online world, they also recognised the importance of equipping their staff with the tools to better help students. A way to do this was by providing them with visibility into what their students were doing online.

“It’s really challenging to get visibility on what happens online with your students. These things are happening in a place you don’t have access to. This means you spend so much time trying to find out ‘things’, and often don’t get the opportunity to act appropriately and help the student”

Derek Champion,
Acting Deputy Head Pastoral Care, Shore

As with most schools, Shore had a significant challenge in gaining visibility into students’ online activities. They recognised that incidents often took place in spaces that were inaccessible to staff, and although they worked with families and the students themselves to gain insights, this resulted in **an incomplete picture**. As a result, staff were unable to intervene effectively, and implement solutions that addressed the problems they were seeing, without considerable time spent investigating, which took them away from their core responsibilities.

How Shore uses Data to:

Inform their overall Student Care Plan

Data is an integral part of Shore’s pastoral care and wellbeing strategy. It helps them identify potentially concerning or risky trends and patterns of behaviour, enabling them to intervene in a timely manner.

The availability of granular data also substantiates conversations and better informs their student support intervention plans. Findings from trend data assist the school to source speakers with relevant expertise and to implement initiatives that address specific student concerns.

Get a holistic picture of each child’s wellbeing

In addition to academic and absenteeism information that most schools collect, Shore now also gathers specific insights from their Linewize solutions around what their students are searching for online, who may be potentially at risk and how they are tracking in the online world.

Linewize Monitor helps them understand the context and interactions their students are having. A human moderator assesses cases that need immediate attention and promptly notifies the school if necessary.



Get a holistic picture of each child's wellbeing (cont.)

By understanding the broader context of each student's situation, the school is able to tailor effective recommendations to help get students back on track. In certain cases, they may request additional details from the student, consult with parents, involve other teachers, or engage relevant students connected to the situation. This collaborative approach ensures the identification of the most suitable resolution, tailored to each student's unique circumstances.

Measure program effectiveness

Data analysis enables Shore to measure the effectiveness of its pastoral programs. Examining the frequency and themes of online incidents has helped the school refine and enhance its strategies, ensuring **they align with the evolving needs of each individual student.**

Distribute ownership and equip the whole school community

Shore understands that a holistic strategy must empower the whole school community to be an instrumental partner in the digital safety and wellbeing of their students. The school equips parents and guardians with relevant information, guiding them to have regular conversations with students. This has helped foster a **collaborative environment** at Shore, **where everyone works together towards the students' overall wellbeing.**

"You can come up with the right intervention because you have the information"

Derek Champion,
Acting Deputy Head Pastoral Care, Shore

"For us to be able to partner with parents, and them getting information too, and helping and coaching them to have conversations regularly is really important"

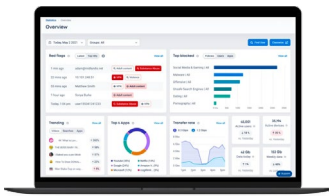
Derek Champion,
Acting Deputy Head Pastoral Care, Shore

Conclusion: A winning strategy for a changing online world

Shore's commitment to digital resilience and wellbeing is evident in its comprehensive pastoral care framework. By leveraging data and technology, the school gains visibility, intervenes promptly, and fosters positive online interactions. Through a character education approach, they equip students with essential skills to thrive in both digital and physical environments, ultimately nurturing well-rounded individuals.



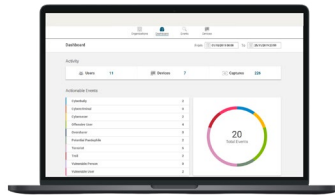
Solutions that empower Shore



Linewize Connect

Powerful education-focused filter and reporting platform.

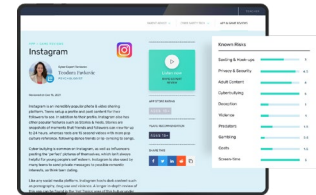
[Learn more >](#)



Linewize Monitor

A real-time digital monitoring, early risk detection solution.

[Learn more >](#)



Linewize ySafe

Online safety education and consulting services.

[Learn more >](#)

About Linewize

We combine Digital Safeguarding technology, child psychology expertise, in-depth educational material, and awareness initiatives to help schools build positive digital cultures – where students can thrive.

www.linewize.io

Email: sales@linewize.io