



Monitor Data Sheet

Advanced mental health protection for K-12

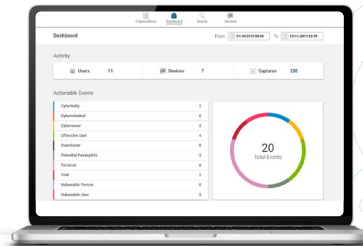
The role of technology in schools has changed, expanding from just computers to curriculum and safety. As digital learning in the classroom expands, the need to protect children online has also become a key safety concern for educators.

How does Linewize Monitor work?

Monitor flags students at-risk based on what they do or say in their digital lives which teachers and parents often don't see, and which therefore often go unnoticed. Using a combination of AI and a team of highly trained human moderators it finds and assesses risks in more categories and in more digital locations than any other solution of its kind.

It is a real-time digital threat detection solution that offers a 24/7/365 moderated service by a team of highly-trained specialists that monitor all alerts and will notify administrators based on the level of risk, making it easier to take appropriate actions at the appropriate time.

Administrators can have peace of mind knowing that they will receive timely alerts from one of our expert moderators if there is an incident of concern.



- ✓ **24/7 Real-time Alerts & Notifications**
human moderators work 24/7, 365 days a year to alert you to students at risk of self-harm, depression, grooming, sexual content, bullying, school violence and others.
- ✓ **Detects risks across the entire digital space**
The only solution to risk-assess (either via AI or human moderation) everything a student types, across Google, O365, offline documents, web chat, social media, and more.
- ✓ **Risk detection across 7 different categories**
Provides the widest categorisation safety-net in K-12 including violence, bullying, suicide, drugs, abuse, extremism and oversharing.
- ✓ **Risk assesses the entire screen**
The only solution of its kind to risk assess (either via AI or human moderation) the full screen, not just the URL; dramatically reducing false positives.

Detect online mental health risks before they become real-life incidents.

Not only must schools ensure they have appropriate filtering in place, but also prevent cyberbullying and other concerns that might stem from a simple browser search. However, technology isn't the only answer, when combined with human interaction, it ensures that vulnerable students are protected.

Flagging at-risk students

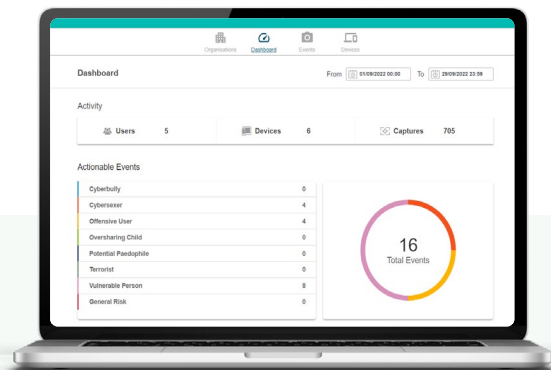
- ✓ **No IT burden**
The solution is cloud-based and deployment is fast and straightforward. There is no IT burden and no ongoing technical administration.

- ✓ **Optimizes staff time**
Provides evidence for support specialists such as Guidance Counsellors and School Liaison Officers to better plan and target their time and interventions.

- ✓ **Works online and offline**
Works offline, capturing risk events even when the device is disconnected from the internet. When the device re-connects, data is transmitted to Linewize Monitor for analysis.

- ✓ **No time-consuming administration**
AI and human moderators work hand in hand to assess and remove false positives and alert you only to that which you need to know about, giving you more time to focus on intervention and supporting students.

- ✓ **Designed to give you peace of mind**
No need to worry about what students are doing digitally. We will assess your students' online behaviour for risks and alert you by phone to any students we believe are in danger.



Having Linewize Monitor as a tool has allowed us to help some of the most vulnerable students within our community and get them the assistance they need.”

**Chief Technical Officer
South Bound Brook District**